

Open AxioVision

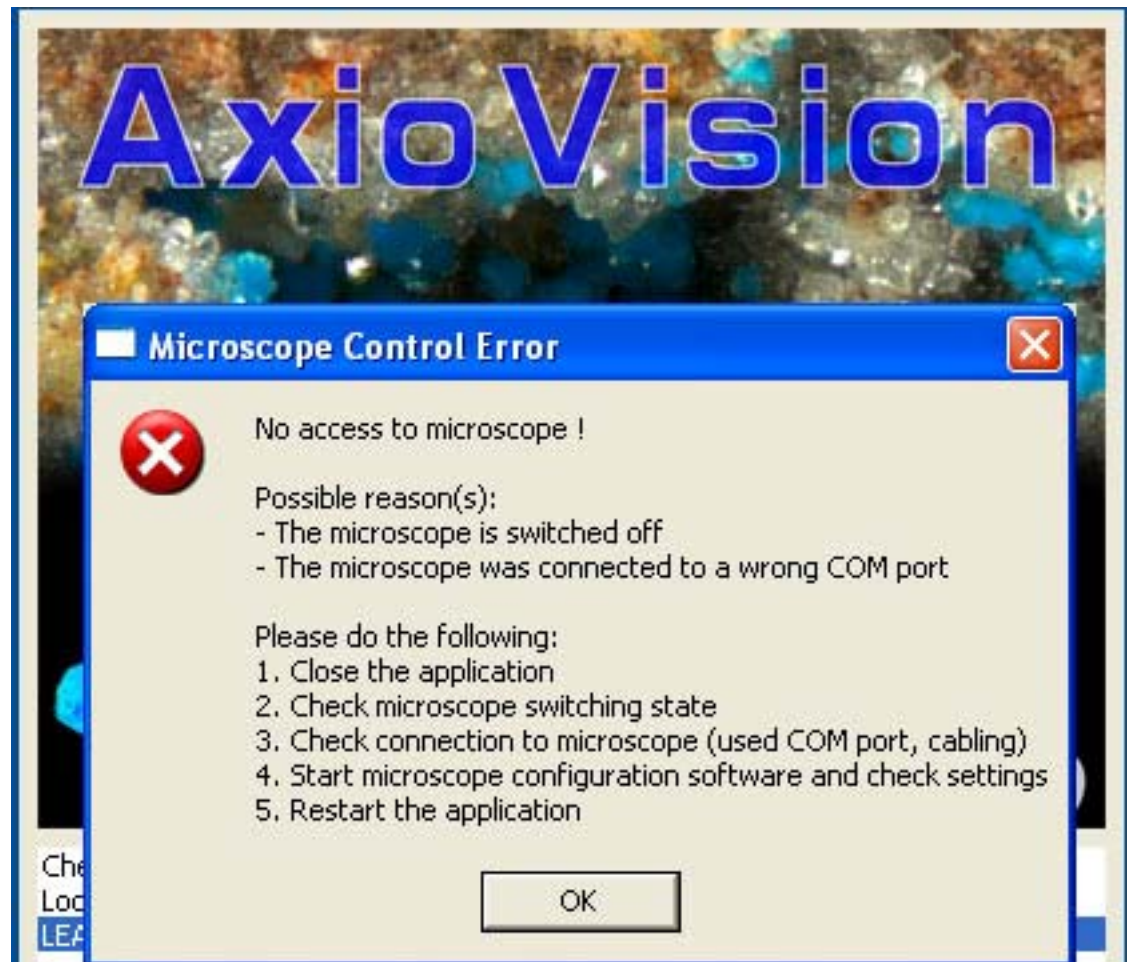


Open the program

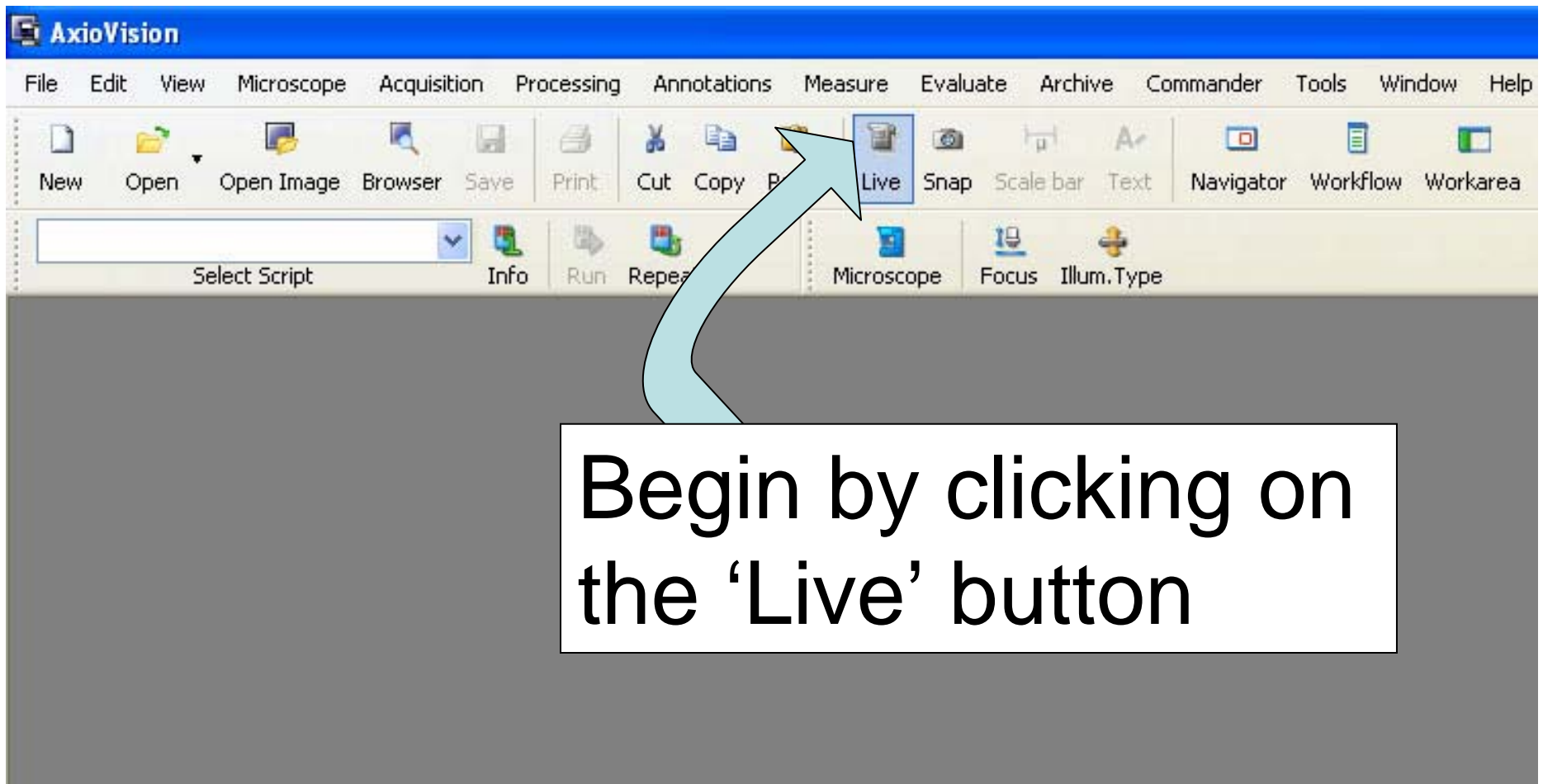


Anticipated Error Messages

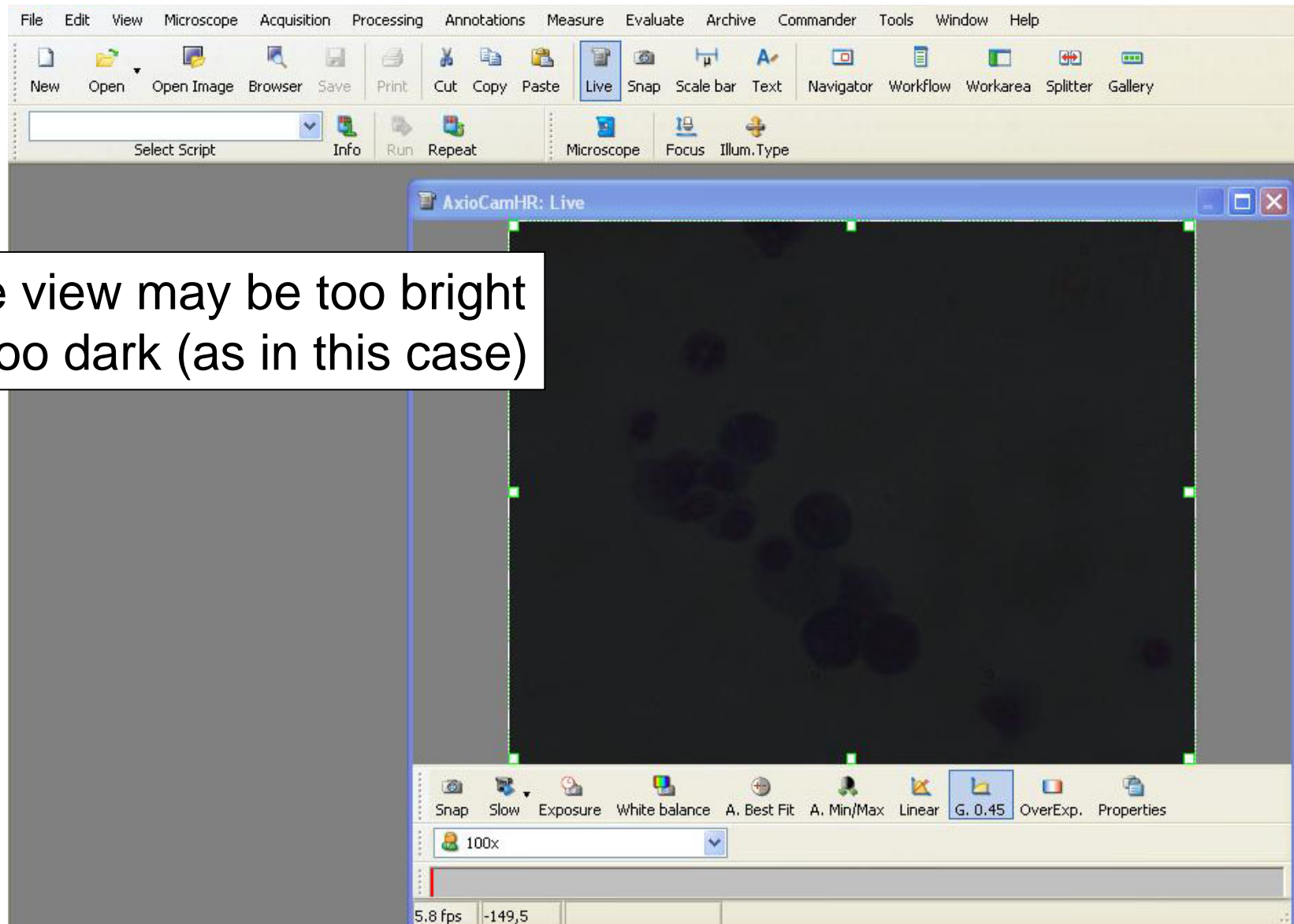
Click 'OK' for these messages and the program will work.

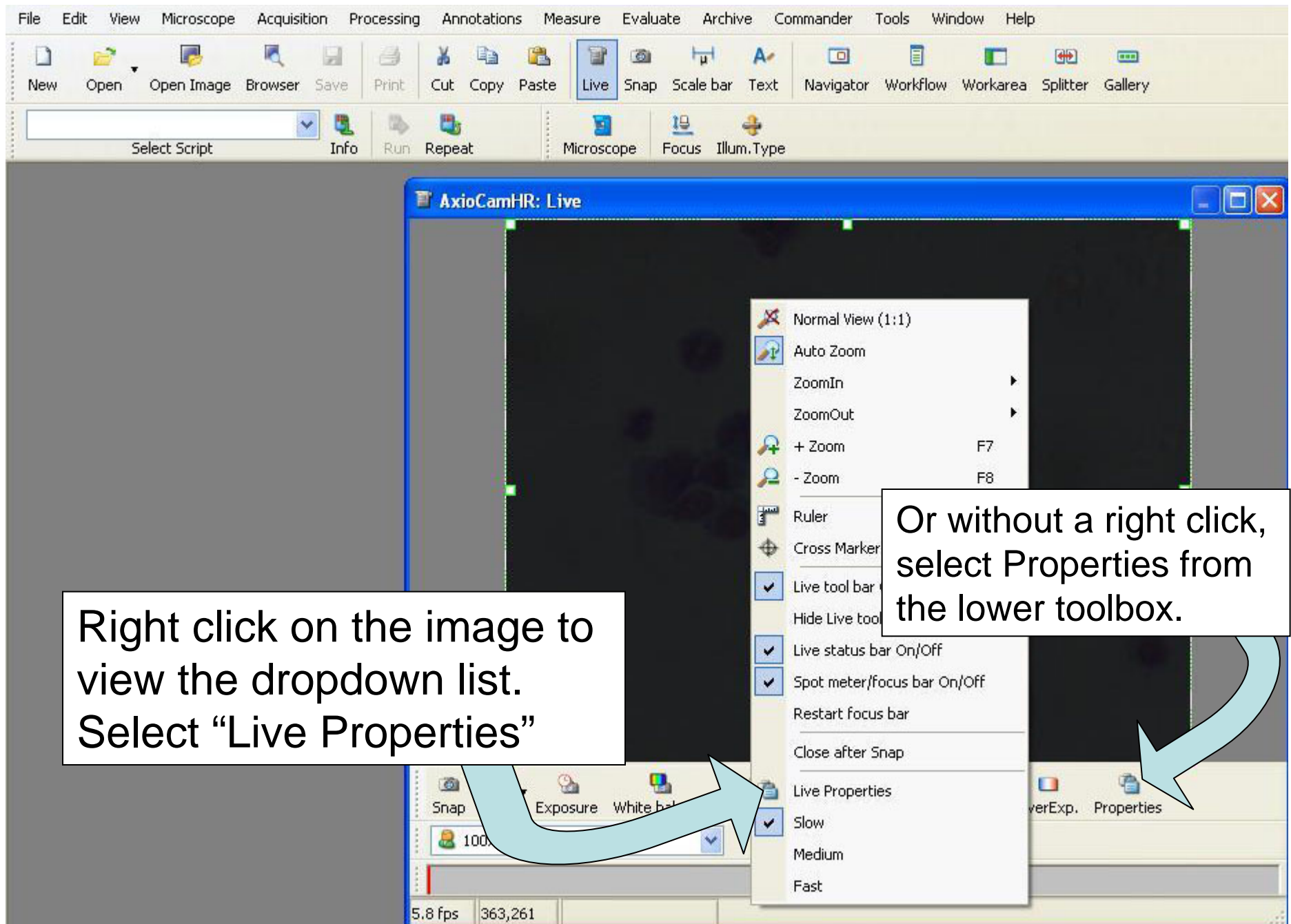


Once the program opens,
the page will be blank.



The live camera turns on

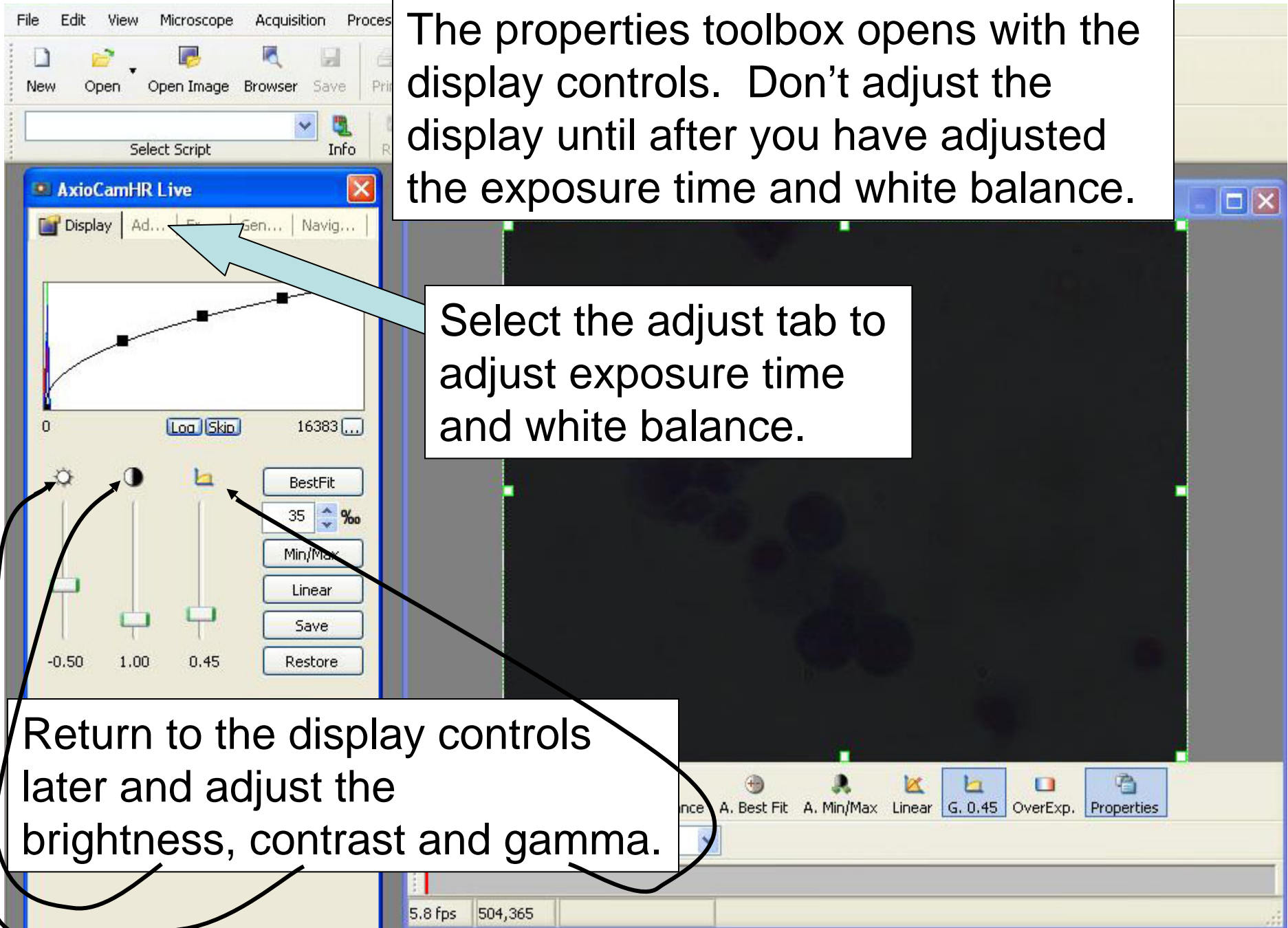


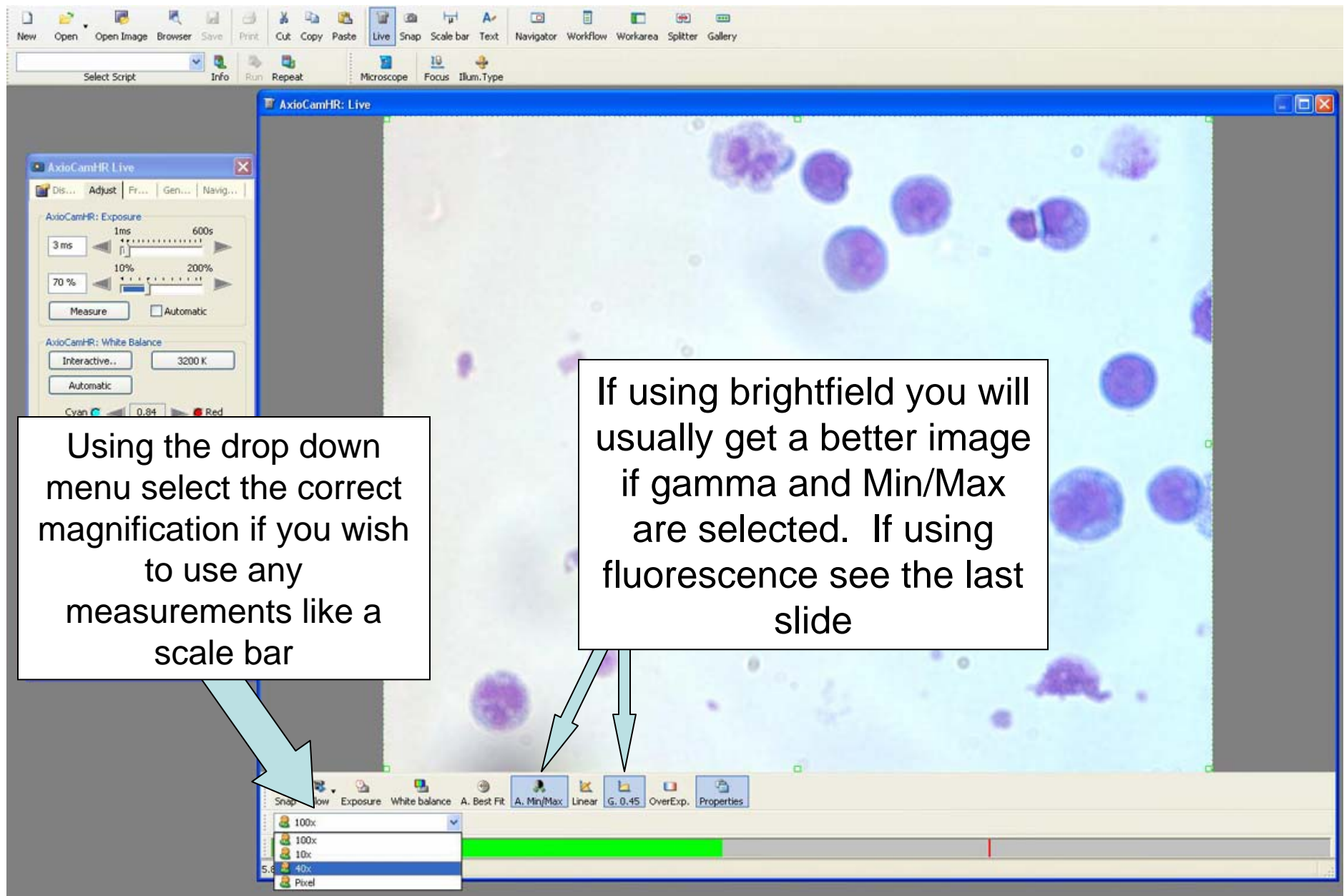


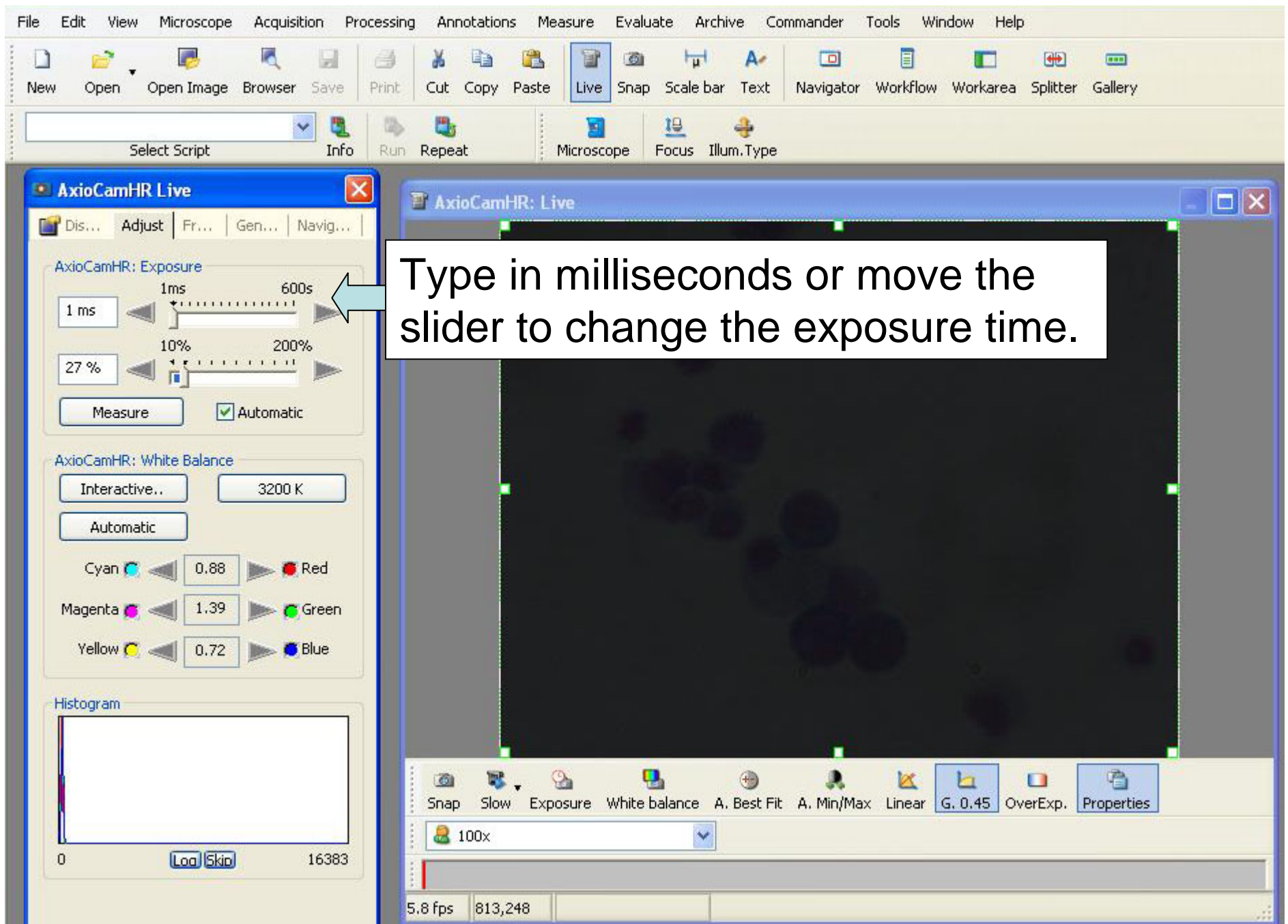
The properties toolbox opens with the display controls. Don't adjust the display until after you have adjusted the exposure time and white balance.

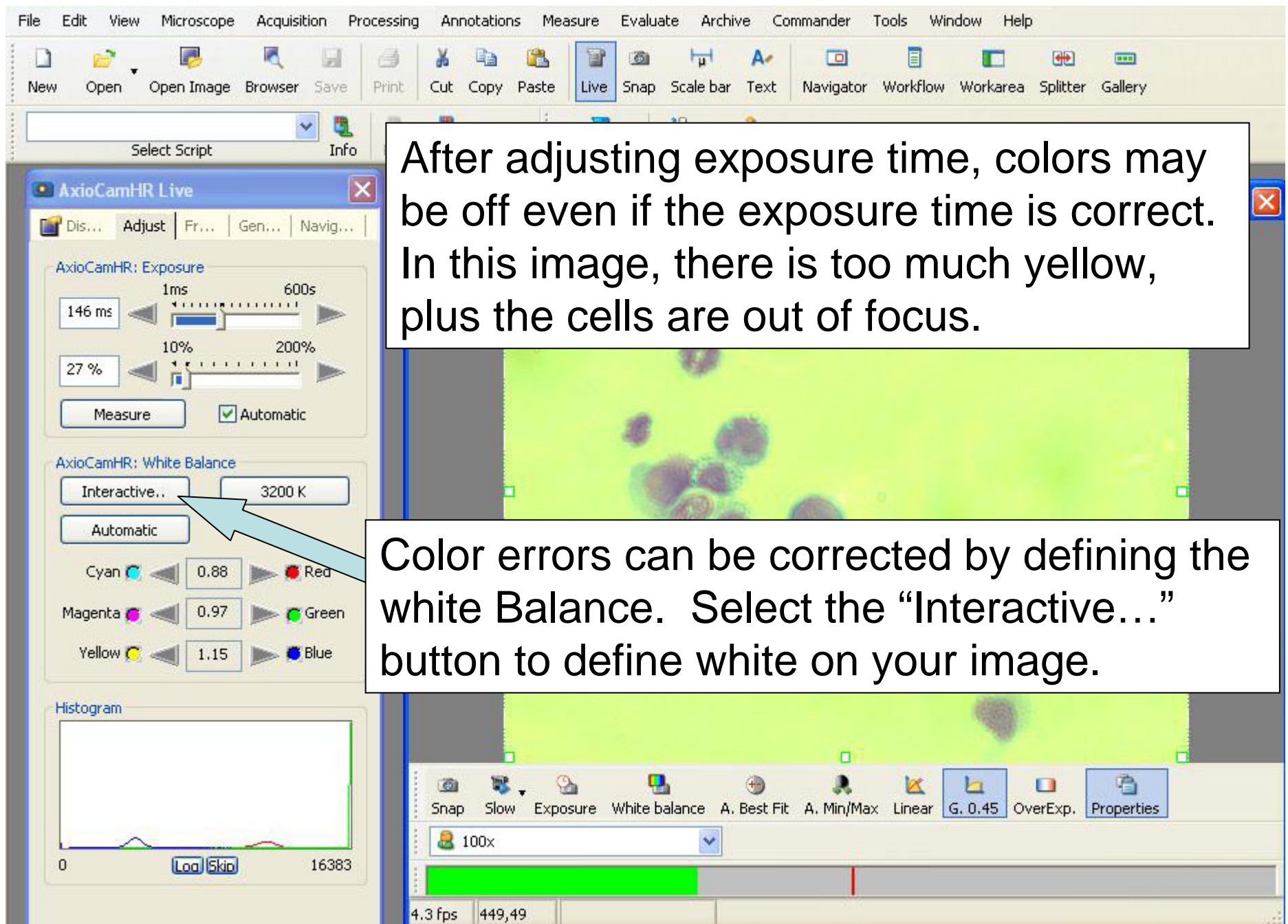
Select the adjust tab to adjust exposure time and white balance.

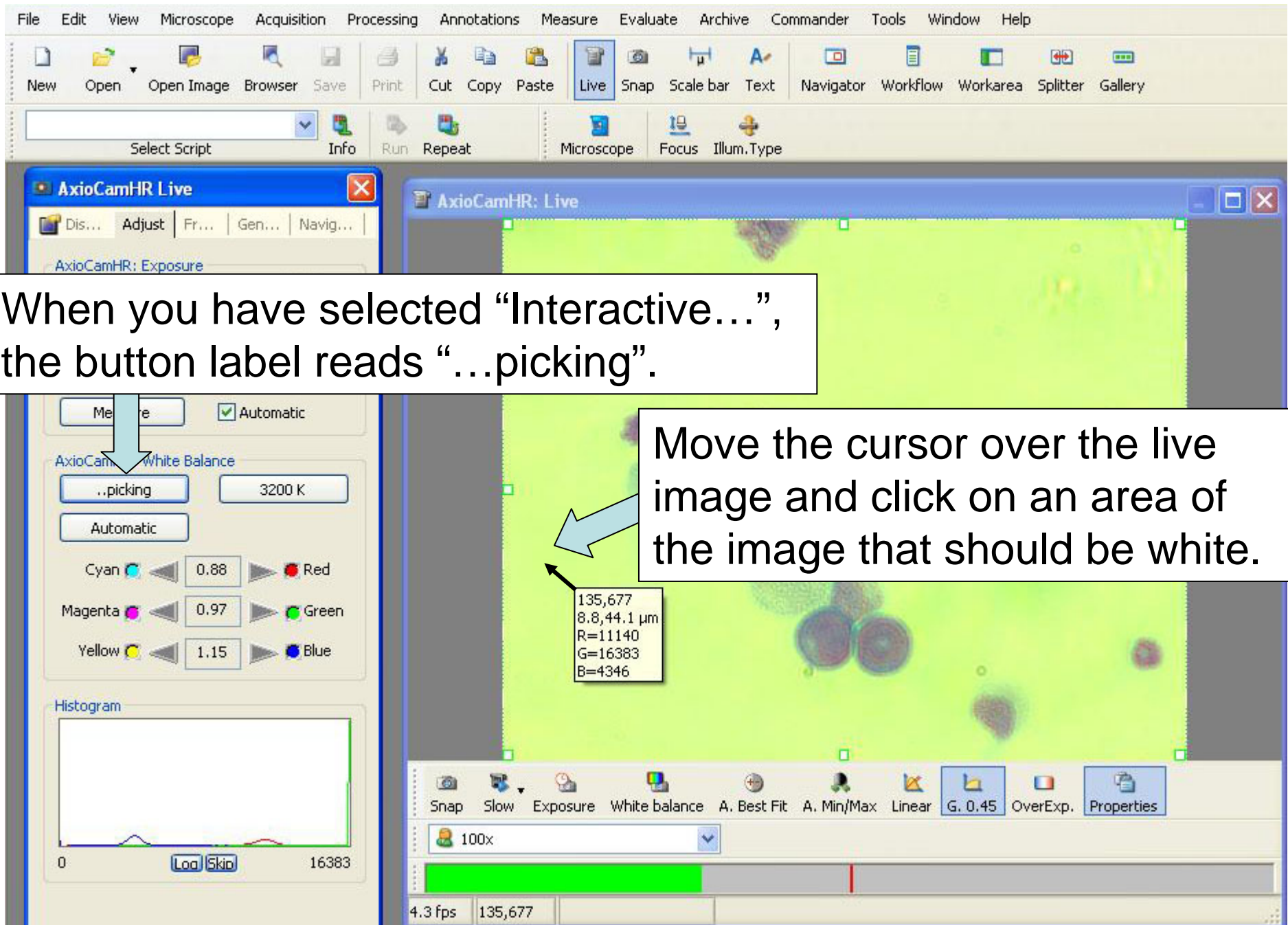
Return to the display controls later and adjust the brightness, contrast and gamma.





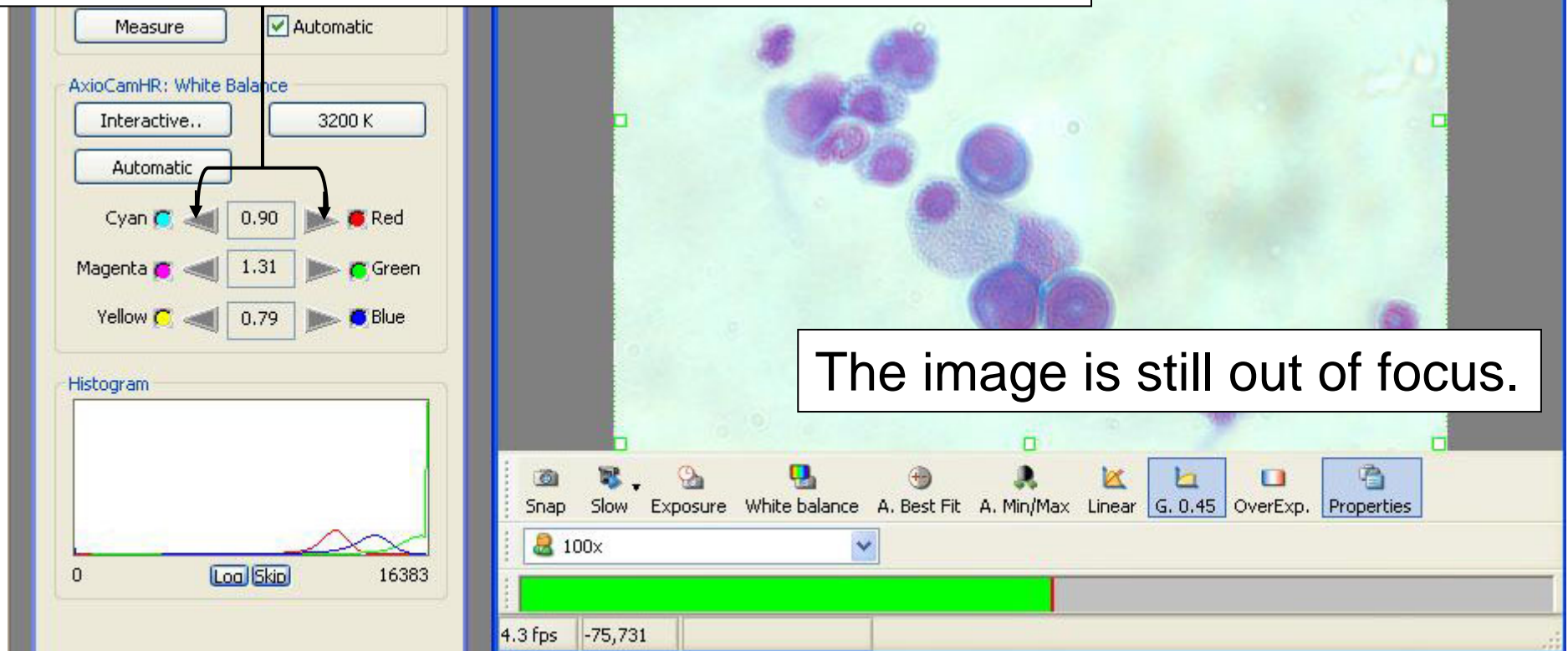




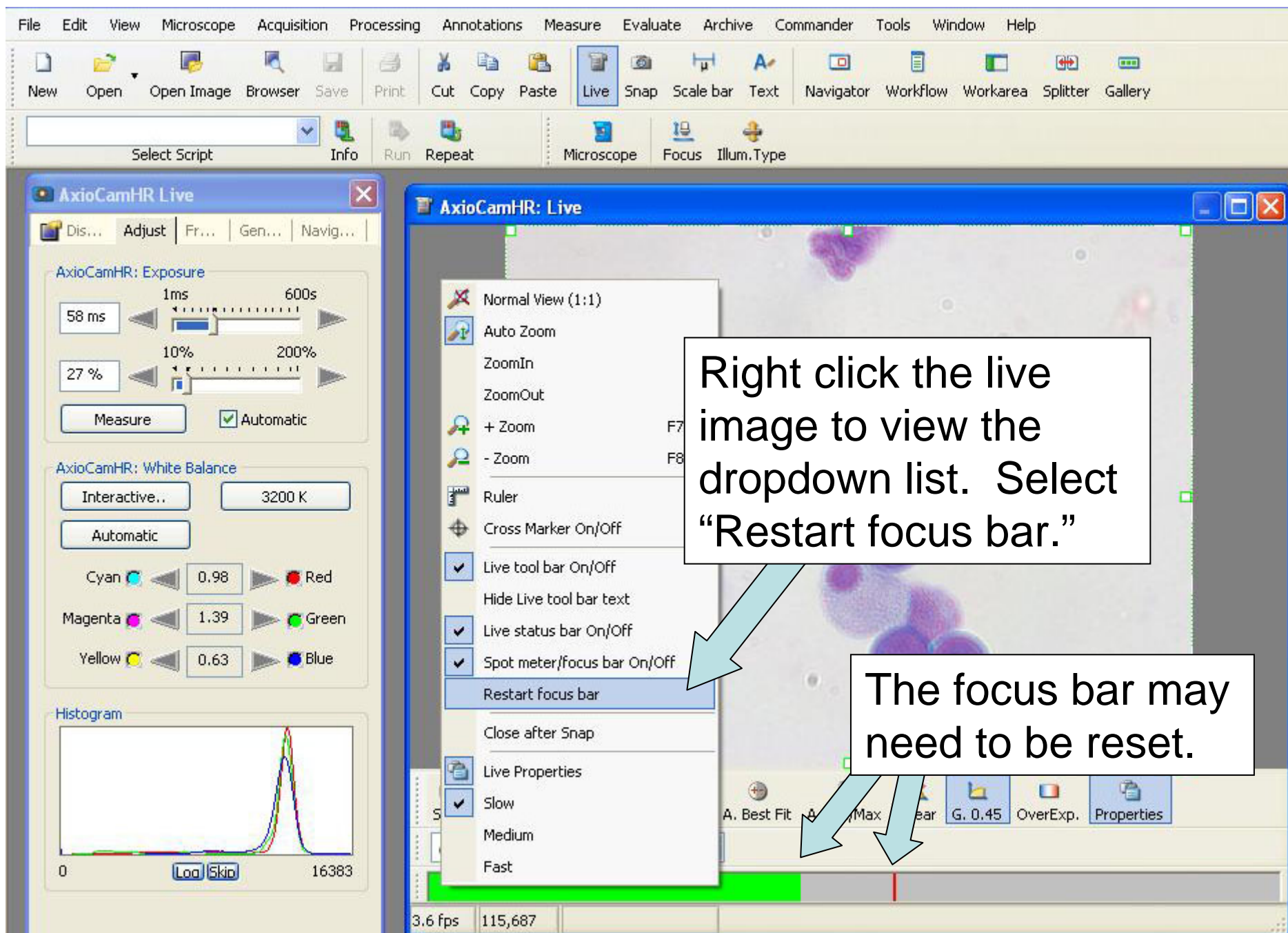


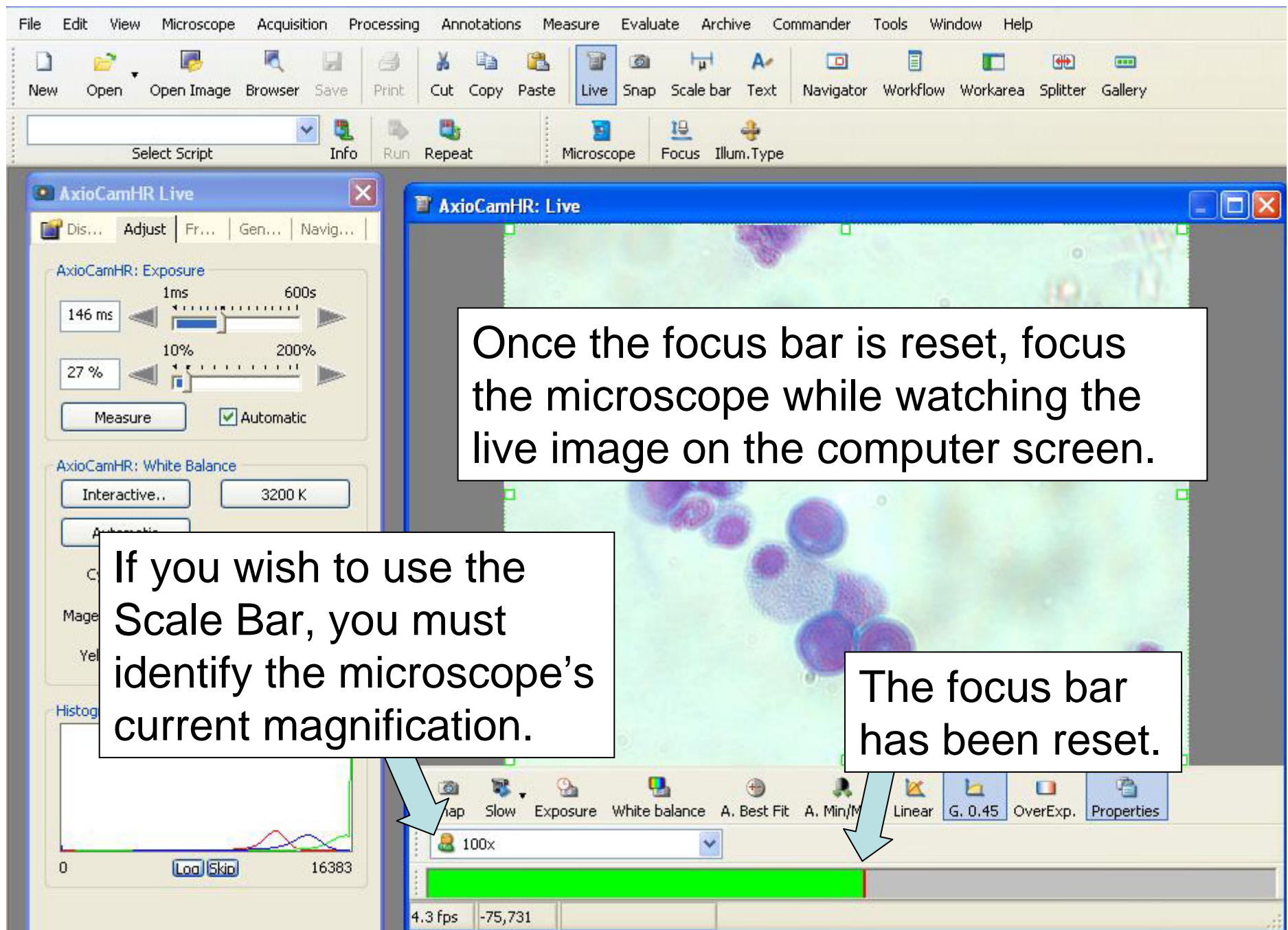


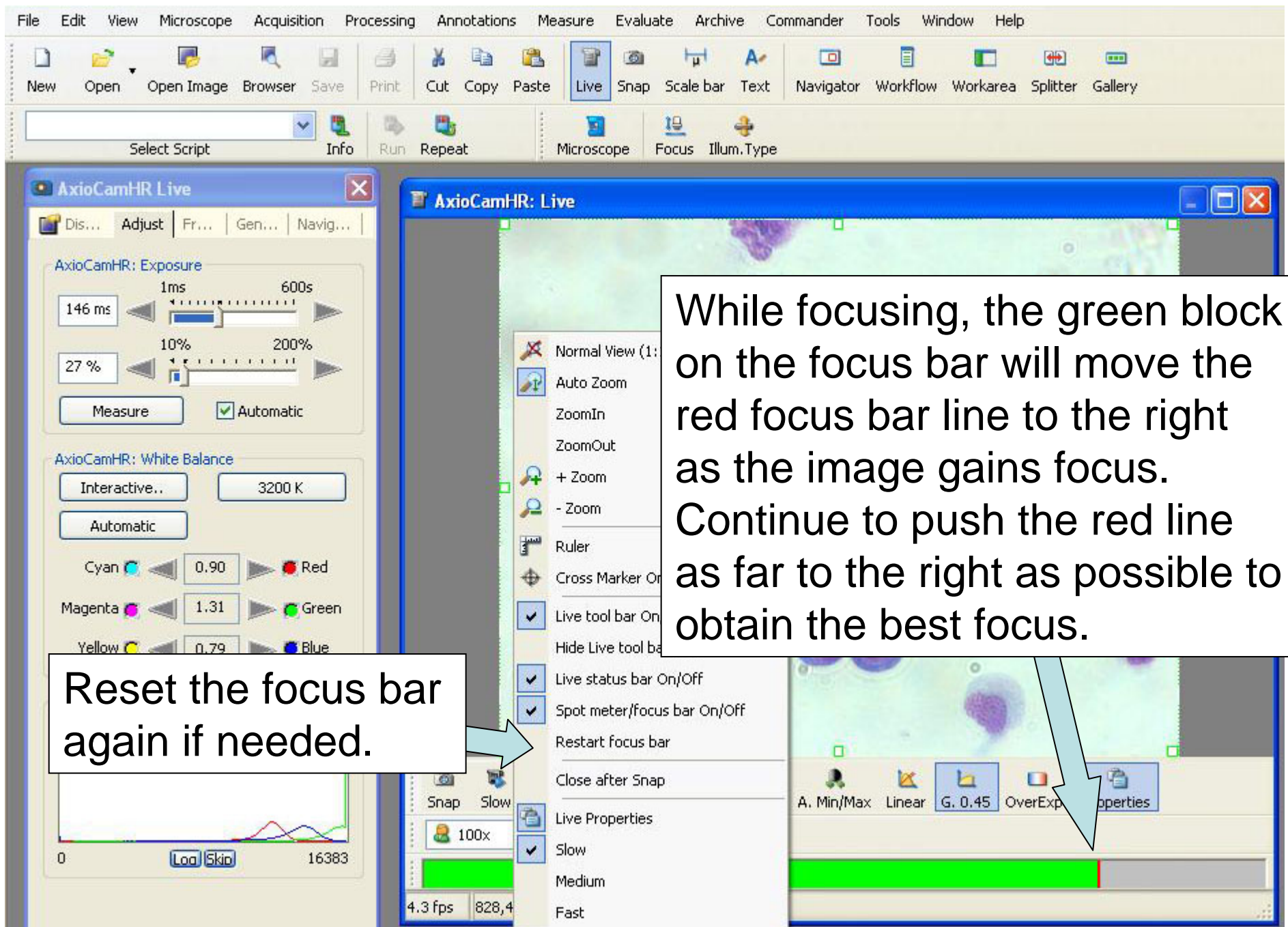
The colors should be correct after picking the area of white on an interactive white balance correction. You may repeat the process or adjust individual colors using the arrows.

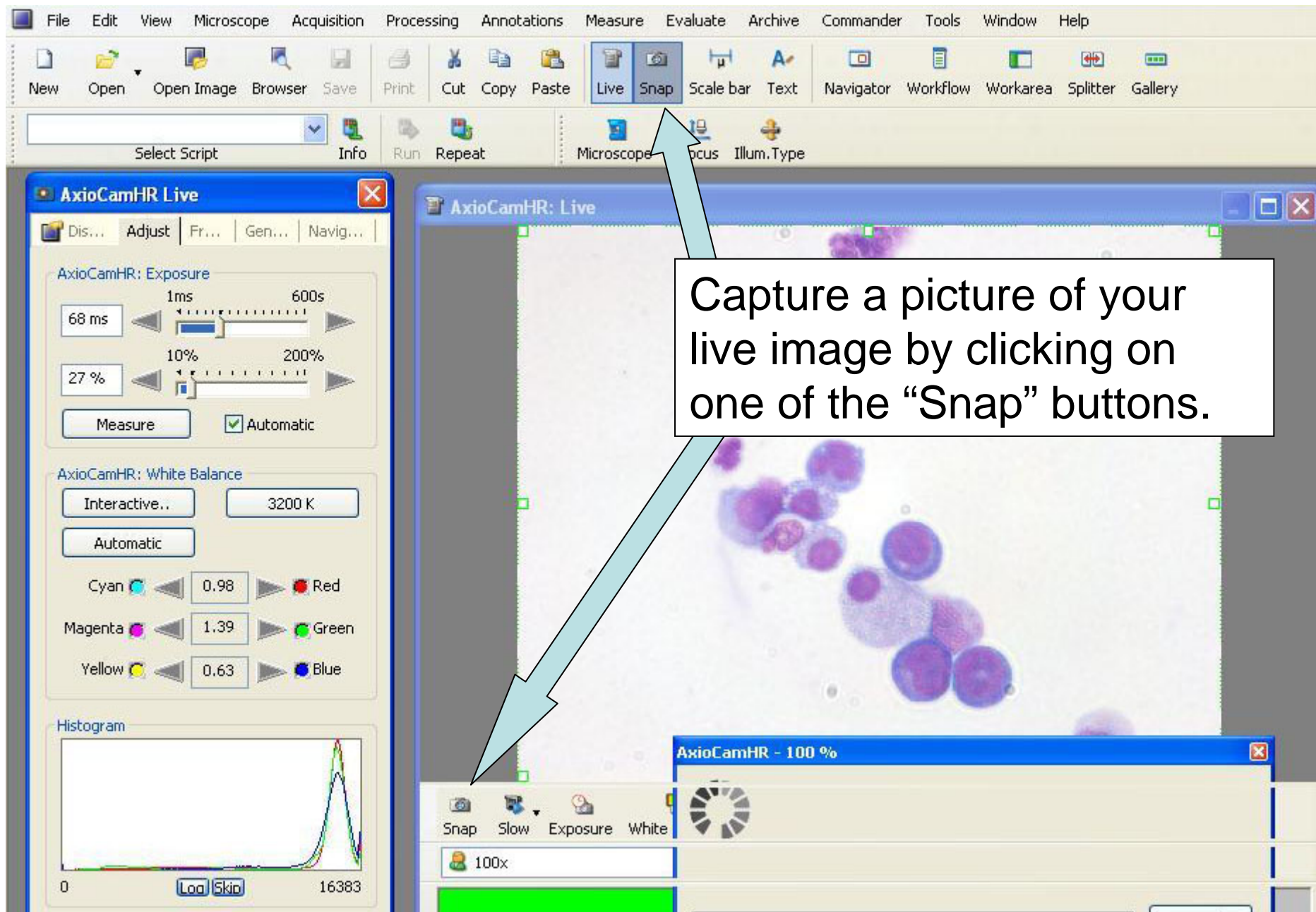


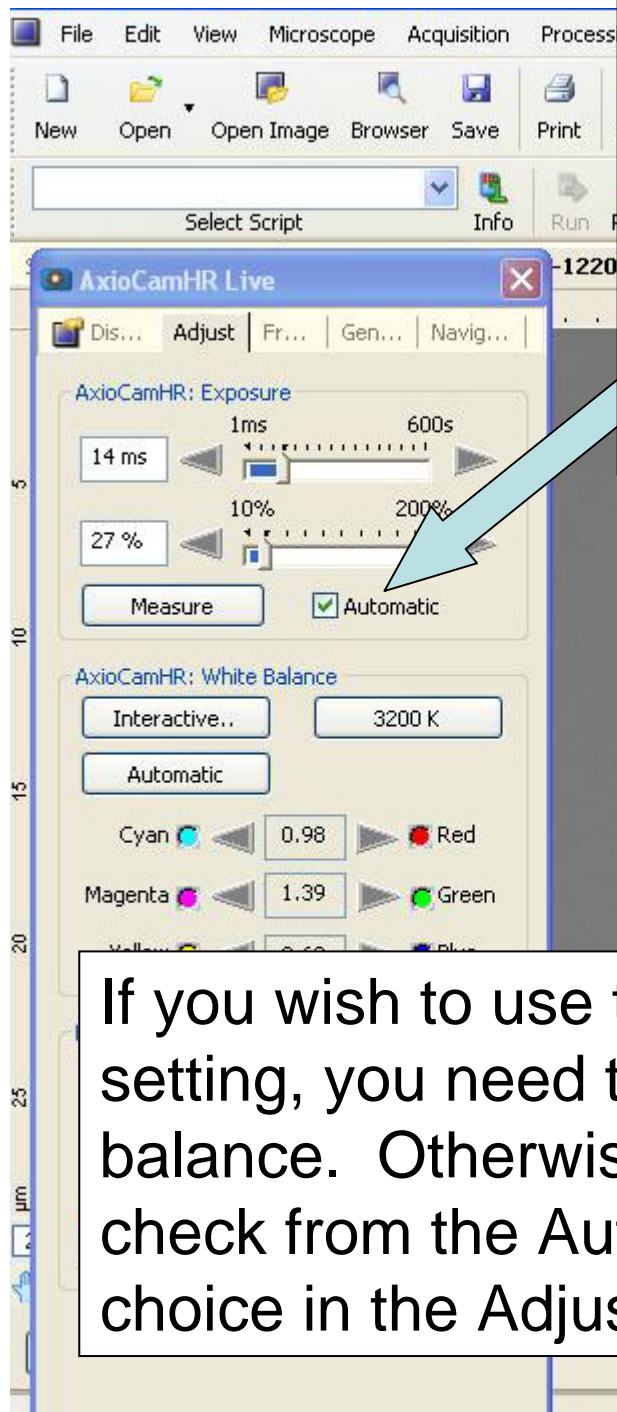
The image is still out of focus.





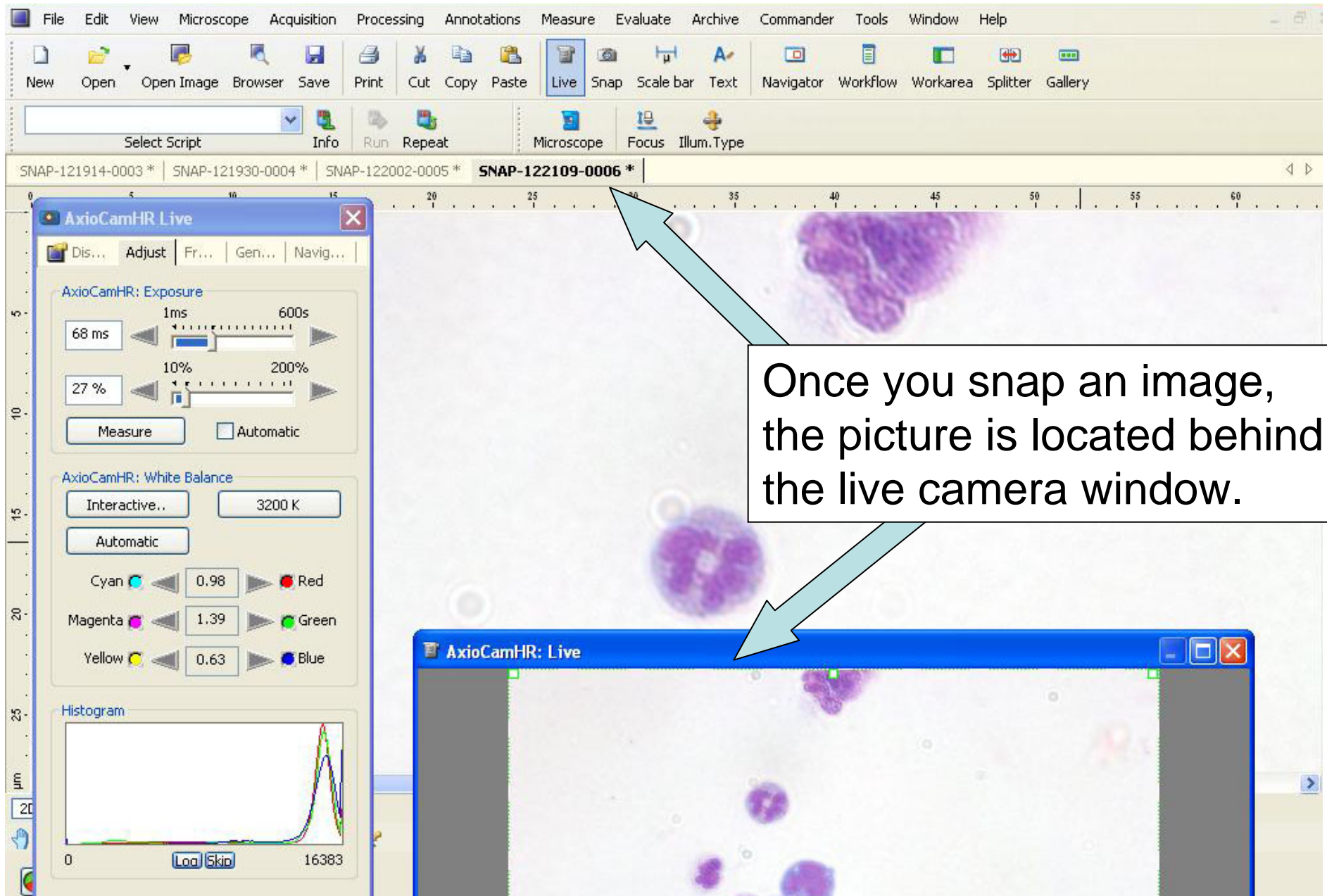


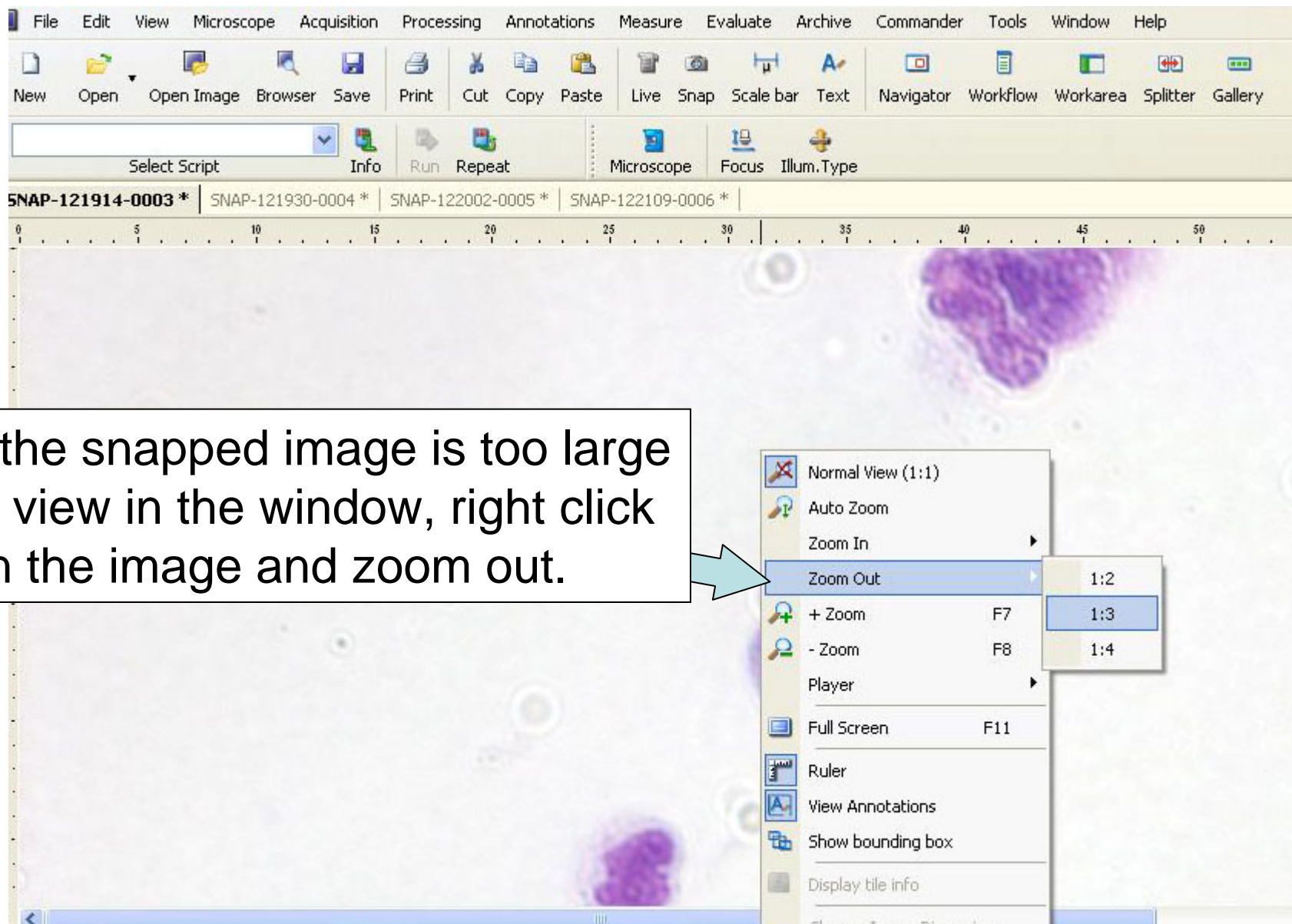


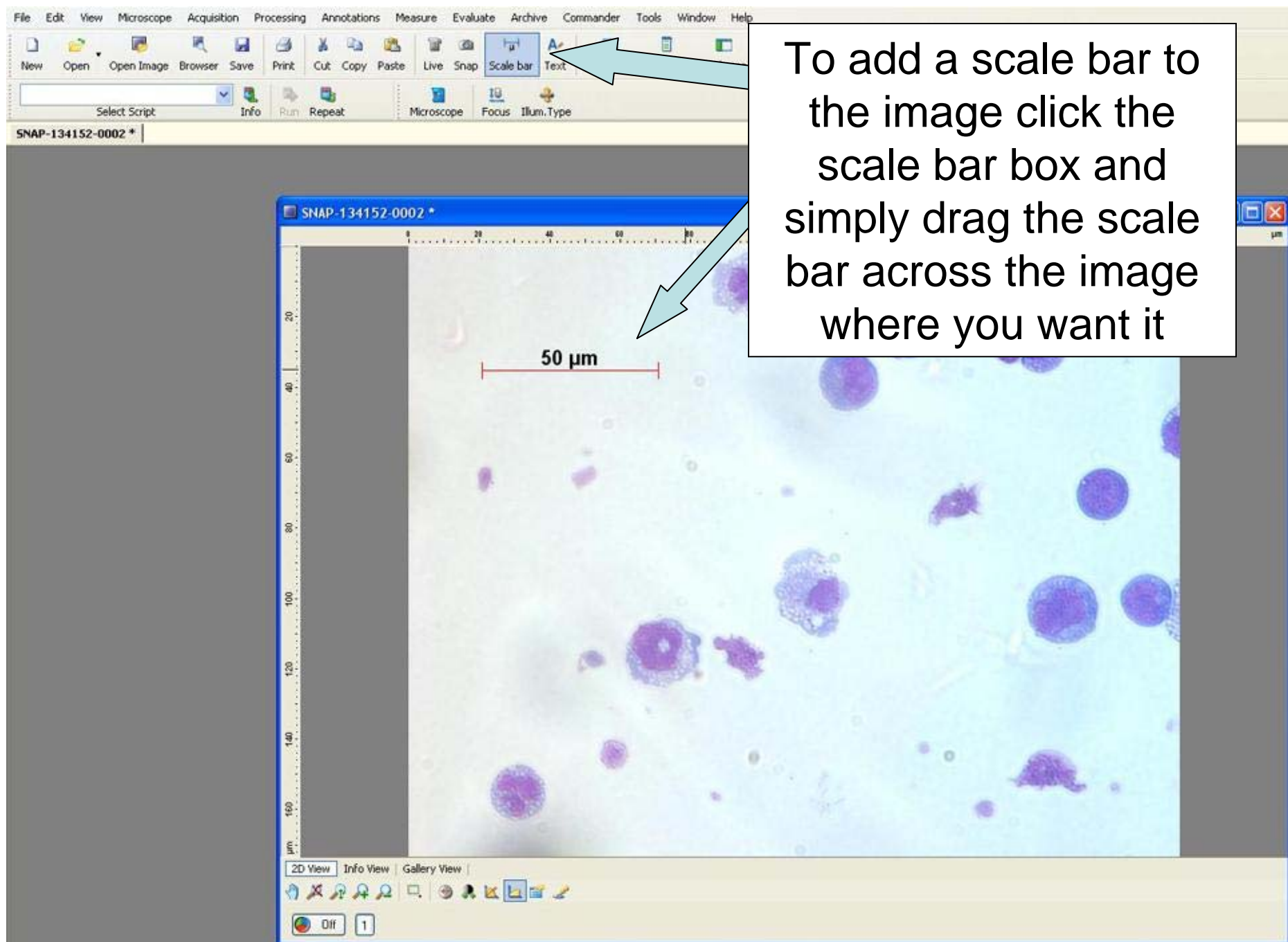


If the colors change on your image, you may have left the Automatic Exposure button on. Notice that the exposure setting on the previous slide was 68 ms. This image turned out dark because the computer determined the exposure time.

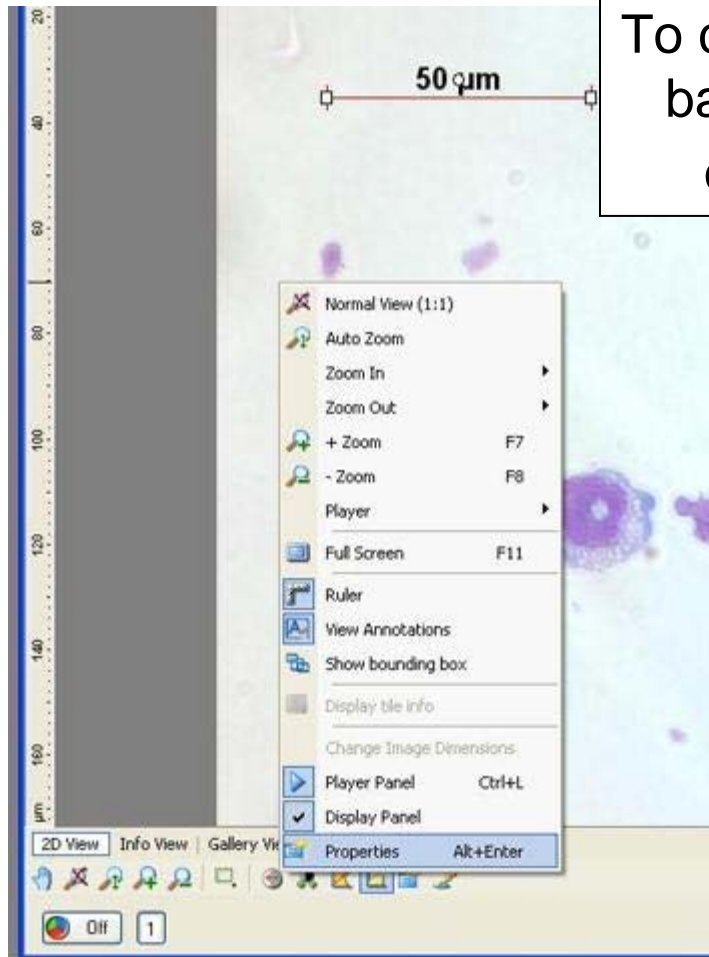
If you wish to use this exposure setting, you need to reset the white balance. Otherwise, remove the check from the Automatic Exposure choice in the Adjust toolbox.



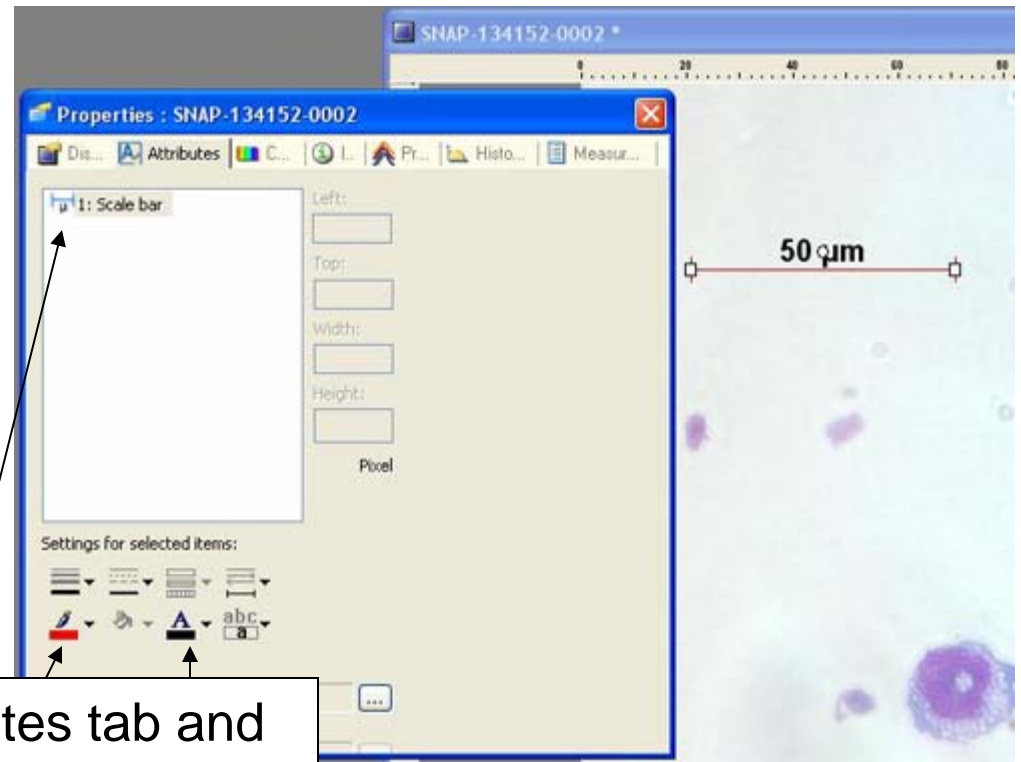




To add a scale bar to the image click the scale bar box and simply drag the scale bar across the image where you want it



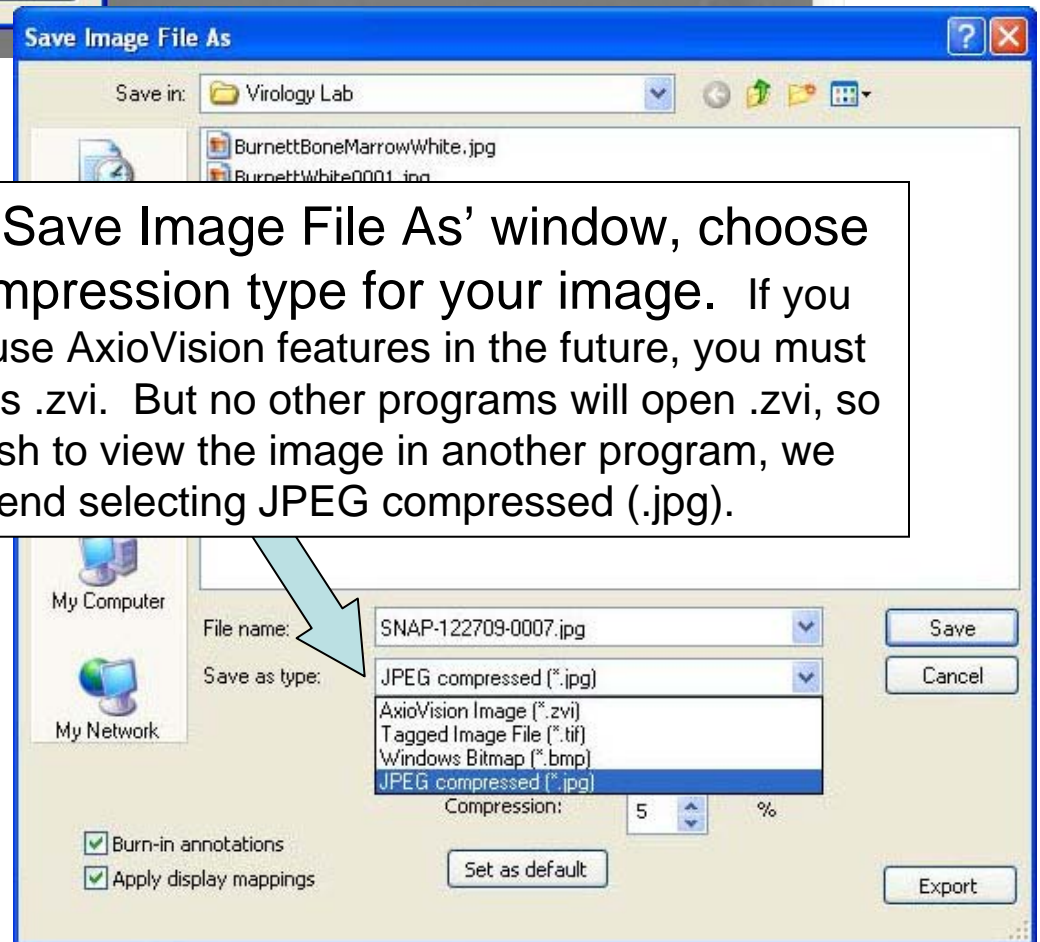
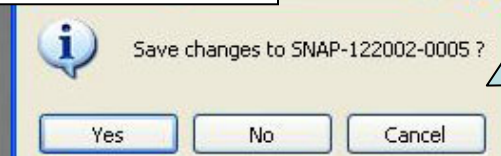
To change the color of the scale bar right-click the image and open the properties page

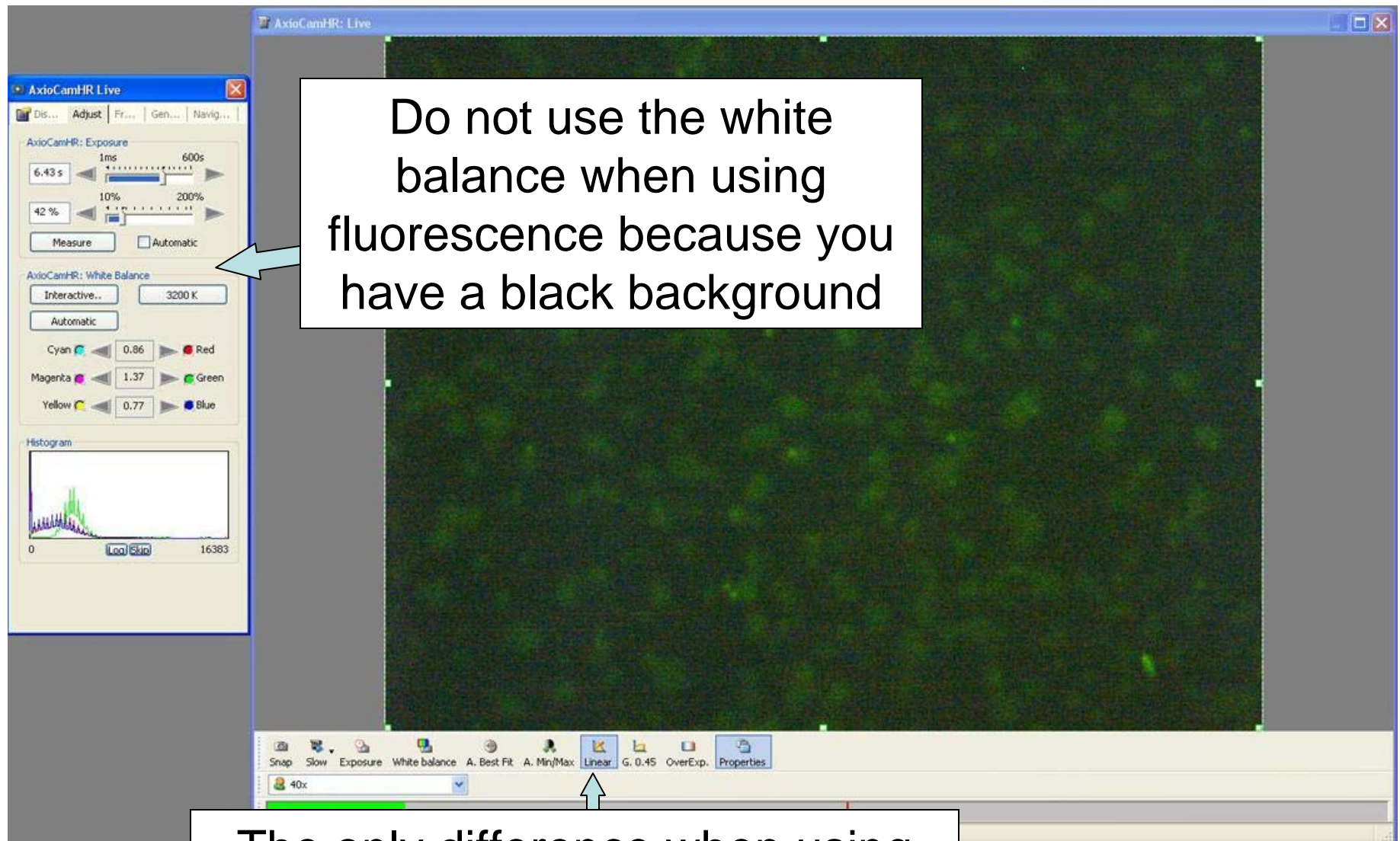


Click on the Attributes tab and click on the scale bar. You can now change the color of the scale bar and the text

Save the image by clicking on the “File dropdown list and choosing “Save” or click the ‘x’ in the corner of the image window to close the window.

If you click ‘x’ to close the window, the software asks whether you wish to save the file.





Do not use the white balance when using fluorescence because you have a black background

The only difference when using fluorescence is you will usually get a better image when Linear is clicked